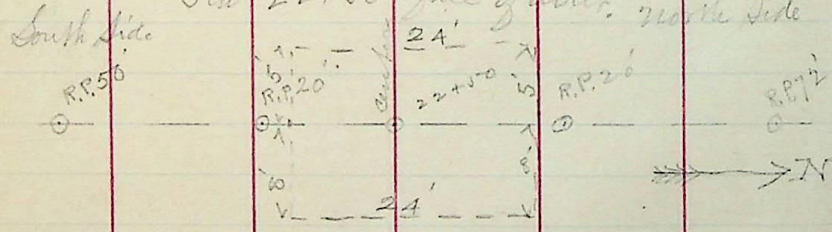


In P.M. Aug 4th 1890 set hubs
 in bottom of Seifer, trench ^{Every 20 feet} from Sta
 23 to Sta 32 + 21' (B.C.) and took
 center same. Also set stakes every
 20 feet on center for top of invert grade
 from Sta 23 to Sta 29.

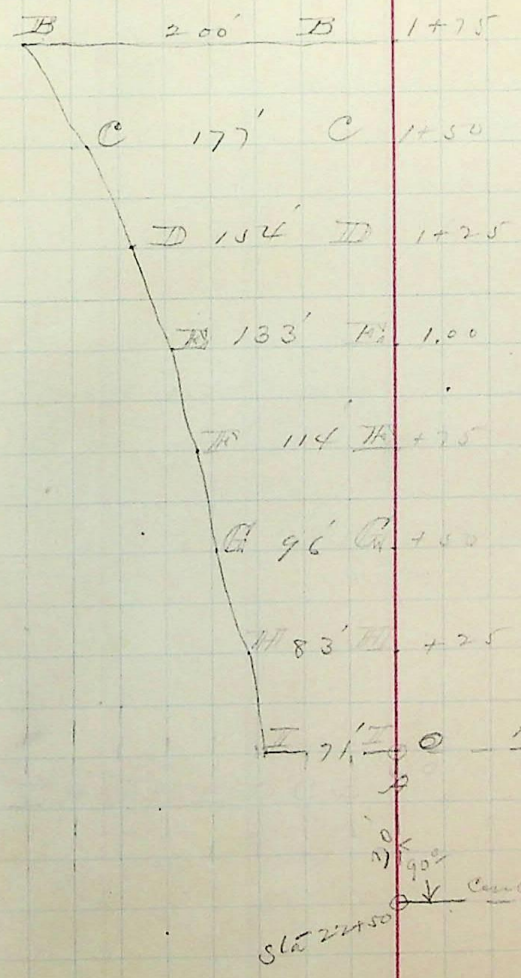
Staked foundation Pit and refer-
 enced same for Abutment at Sewer Outfall
 Sta 22 + 50 = face of abut. north side



Lat - A.M. Aug 9th 1890

Also set stake at Sta 27 and
 marked 'Manhole here'

Survey of Borrow Pit
 at
 Sewer Outfall.



P.M. Aug 8th 1890

Reg Way Line
 center line of sewer
 Sta 22 + 50